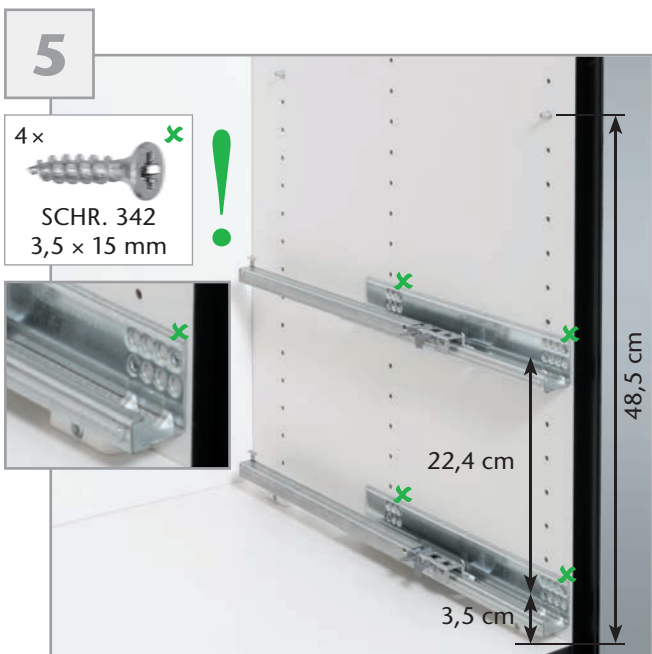
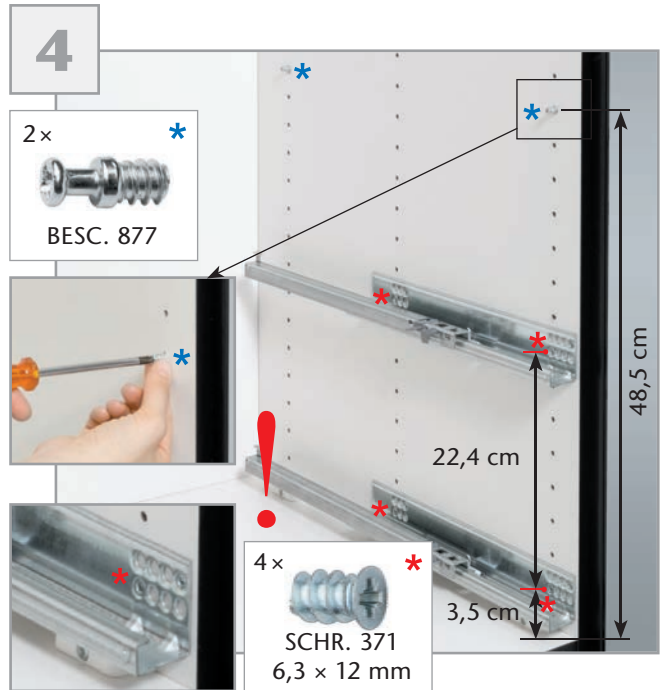
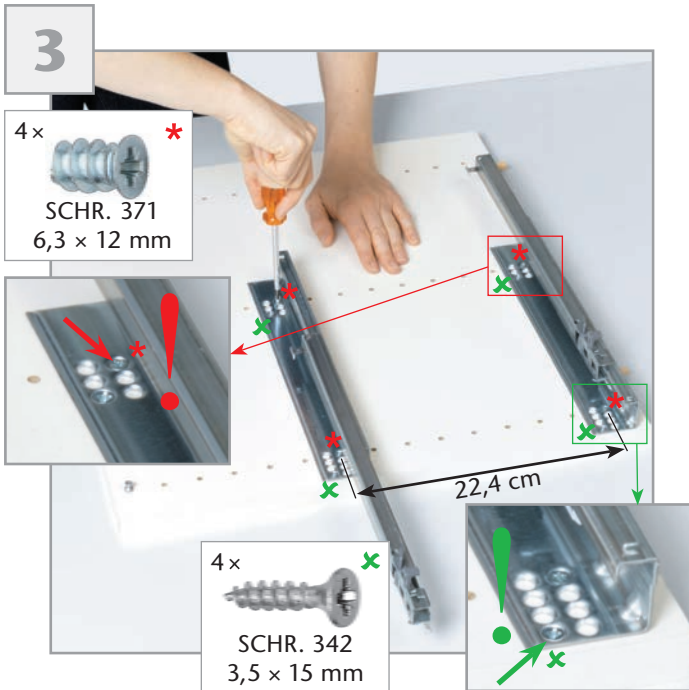
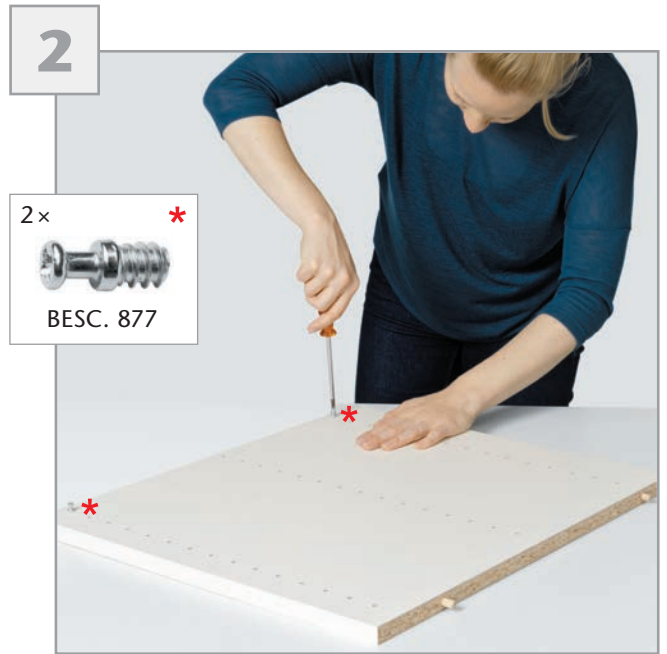
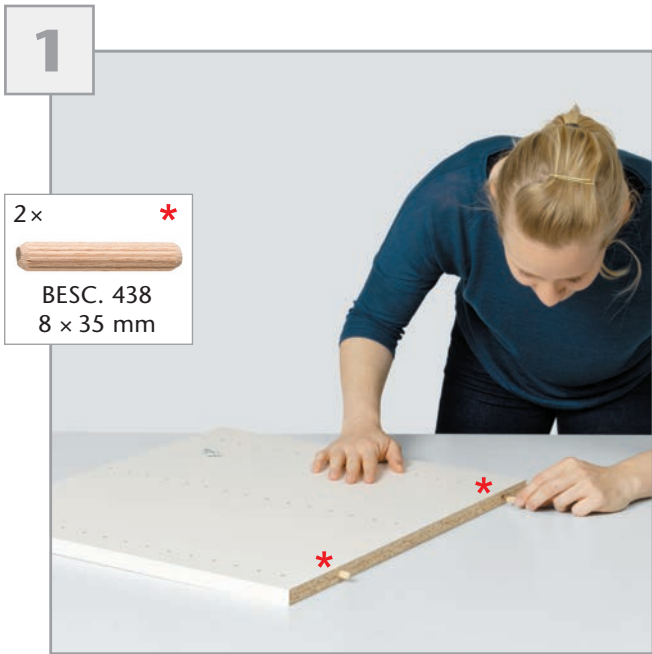


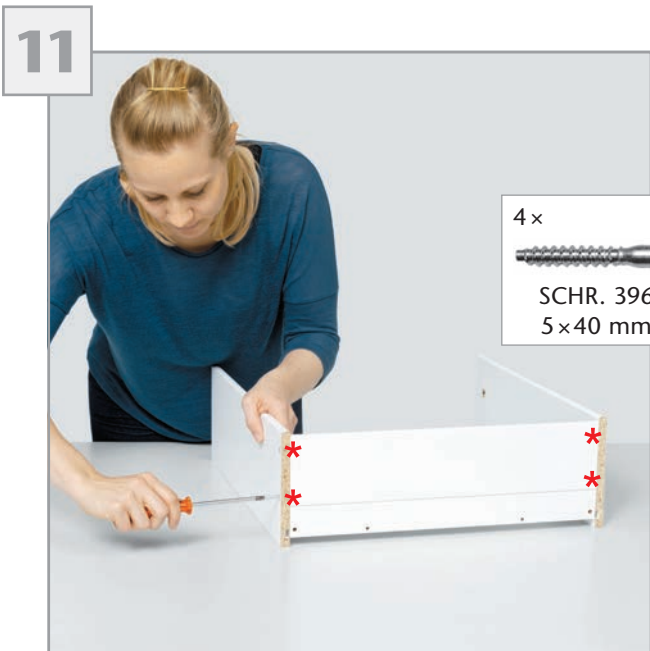
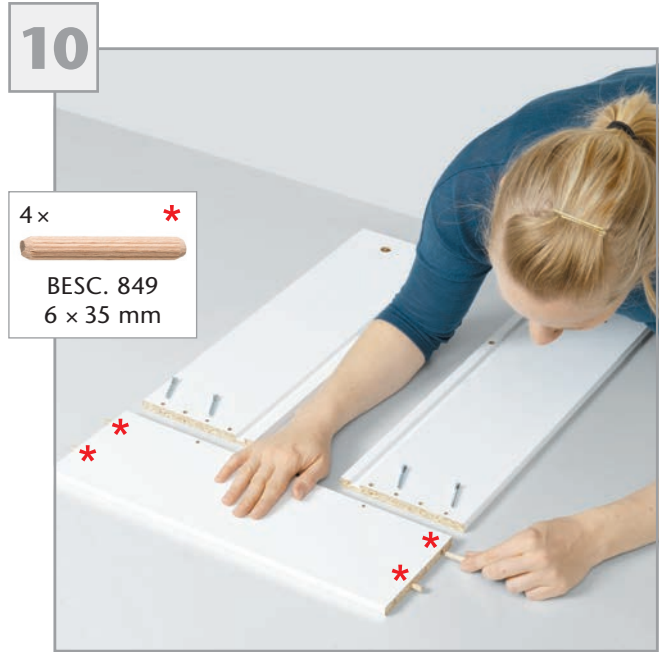
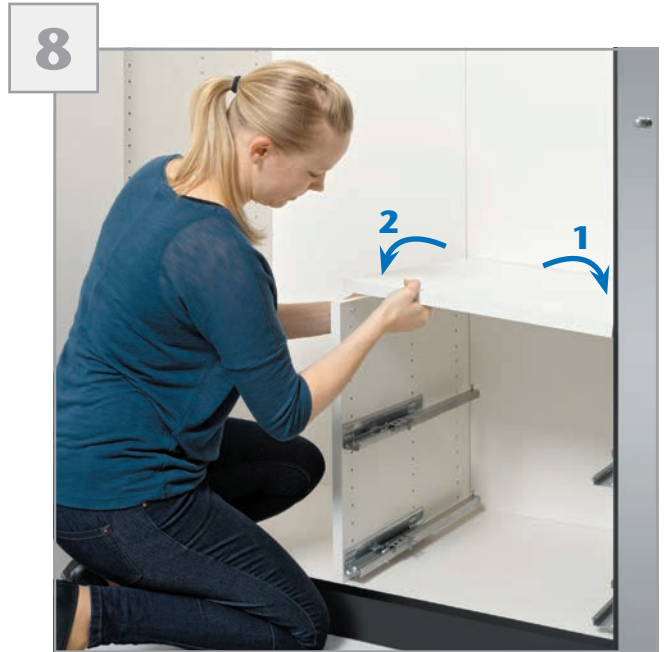
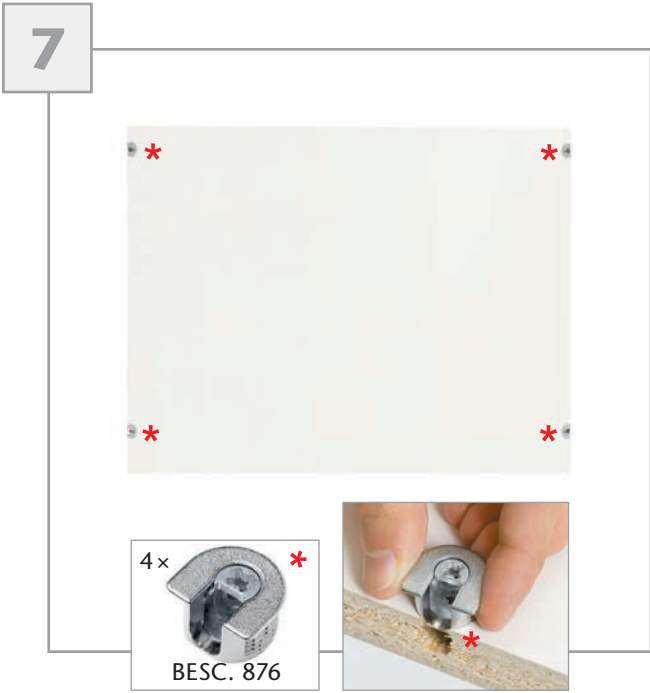
2 × **16 ×** **4 ×** **8 ×** **12 ×** **M: 1:1**

BESC. 438 8×35 mm
BESC. 849 6×35 mm
BESC. 877
SCHR. 371 6,3×12 mm
SCHR. 396 5×40 mm

8 × **4 ×** **3 ×** **3 ×** **3 ×** **4 ×** **4 ×** **3 ×** **3 ×**

SCHR. 342 3,5×15 mm
BESC. 876
BESC. 477
BESC. 488
SCHR. 340 M4×26 mm
BESC. 772
BESC. 847
BESC. 397
BESC. 889




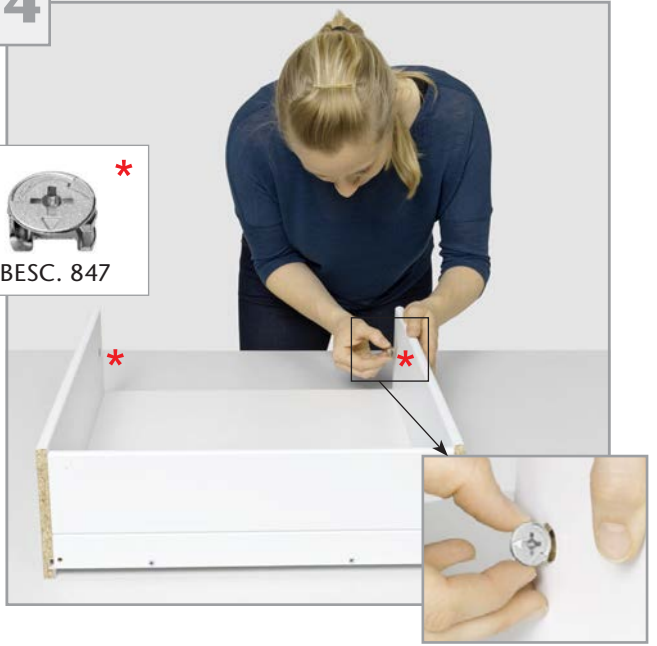


13




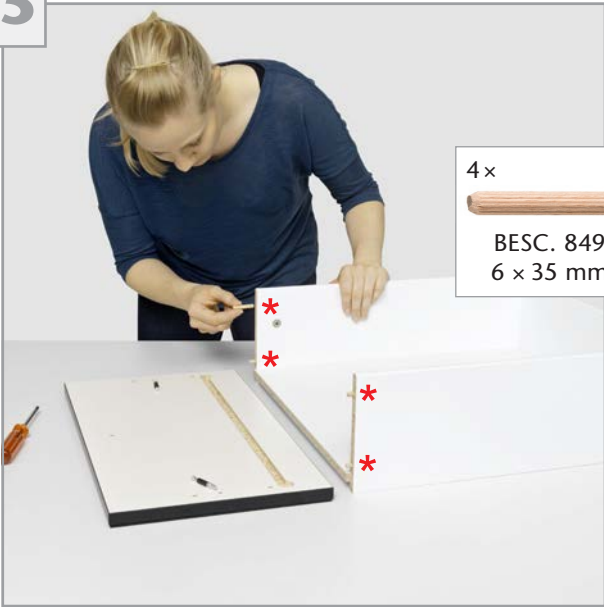
14

2x *

 BESC. 847



15

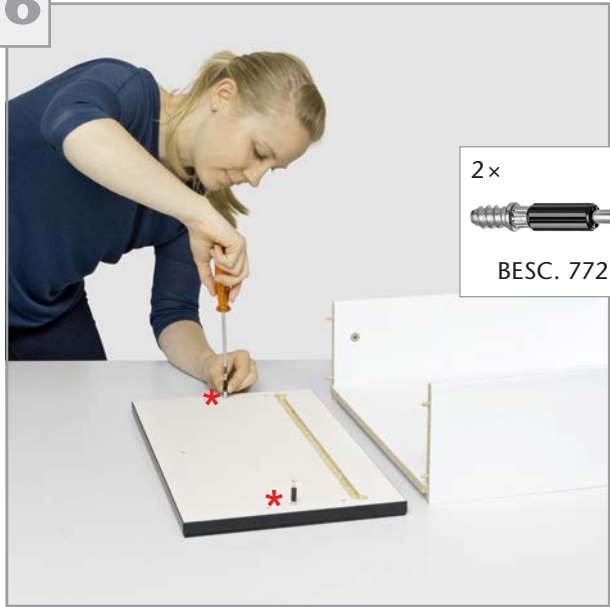
4x *

 BESC. 849
 6 x 35 mm



16

2x *

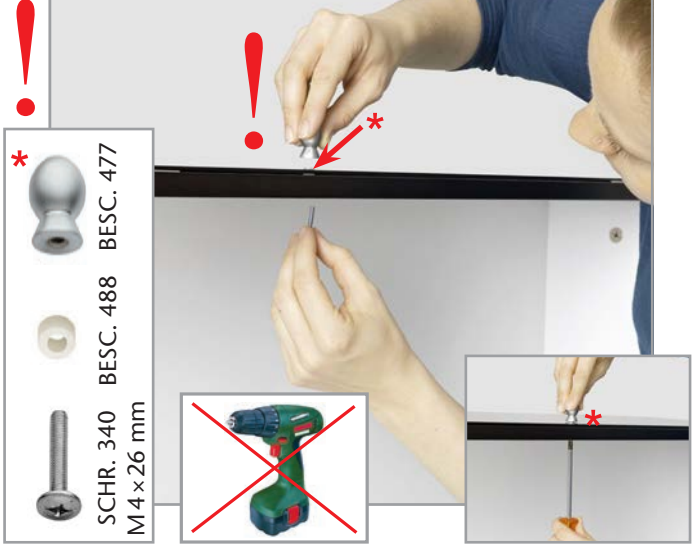
 BESC. 772



17



18



19



20



21



22



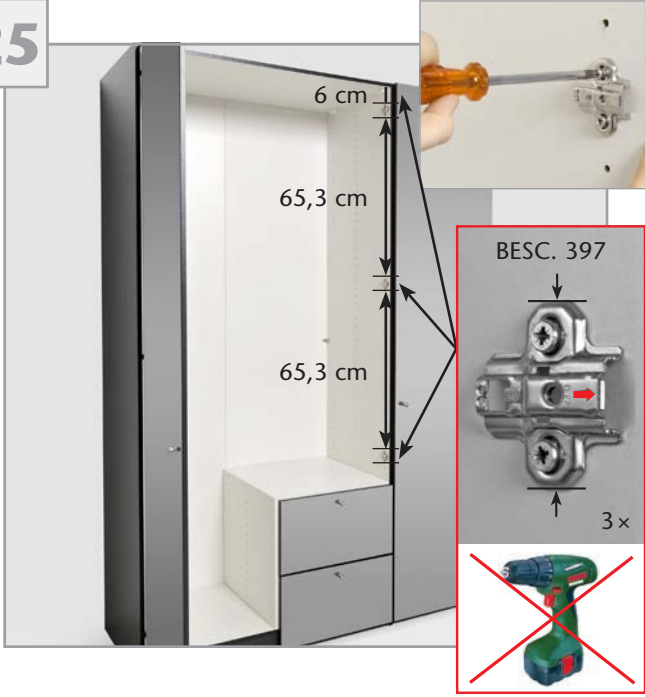
23



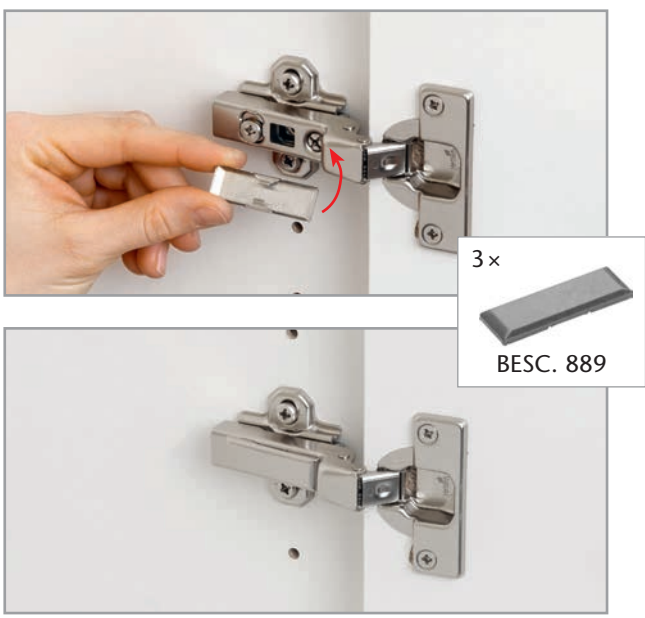
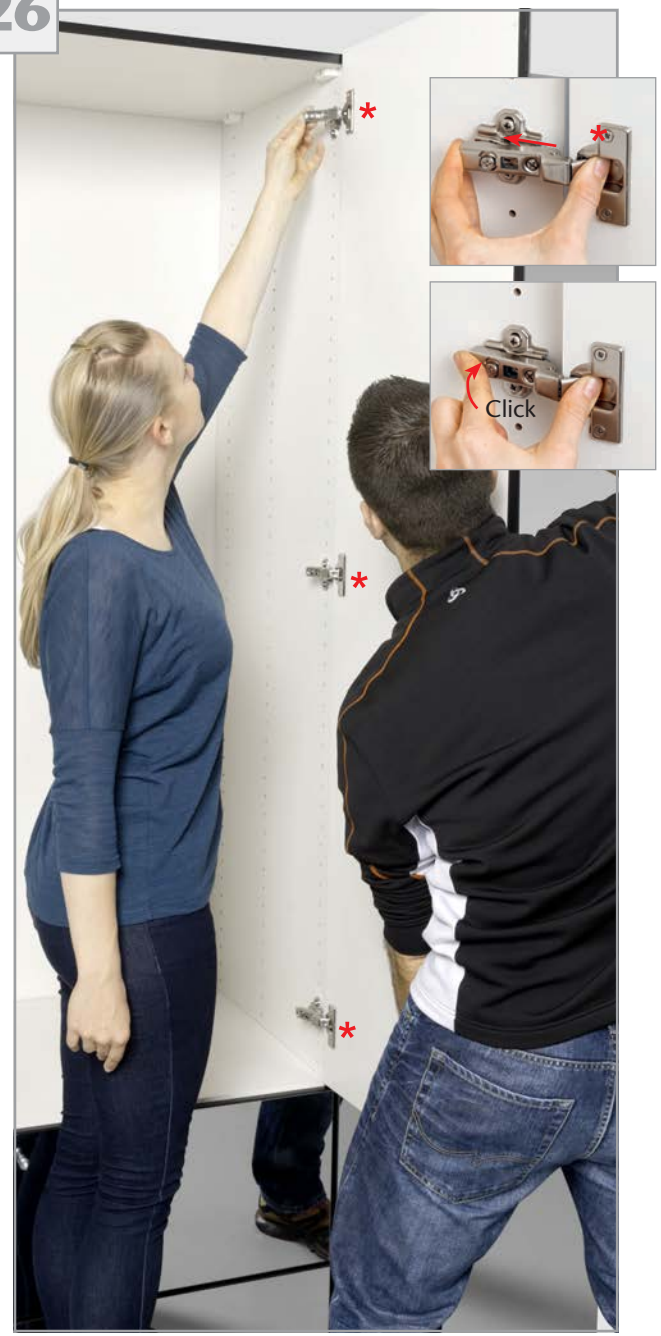
24



25



26



27

